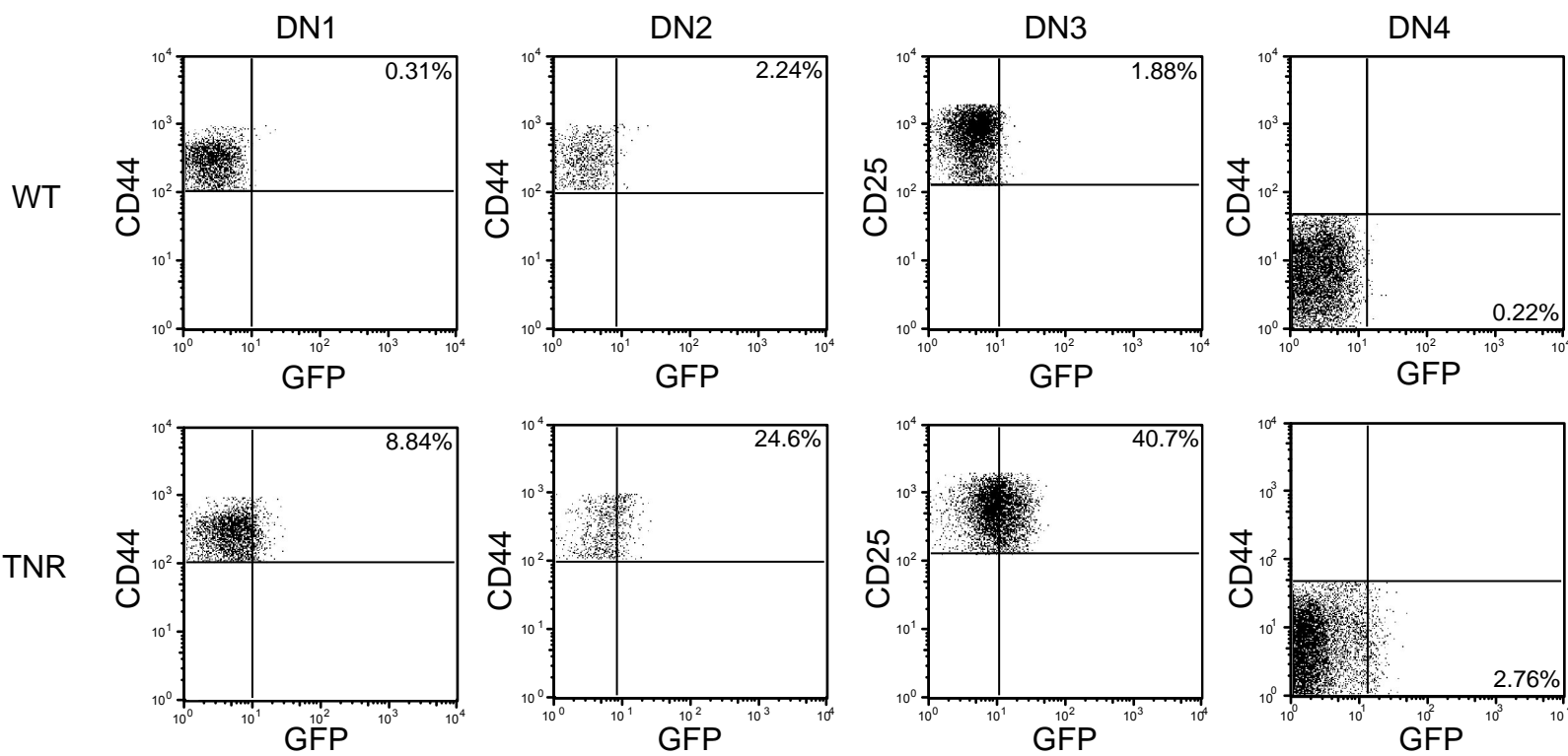
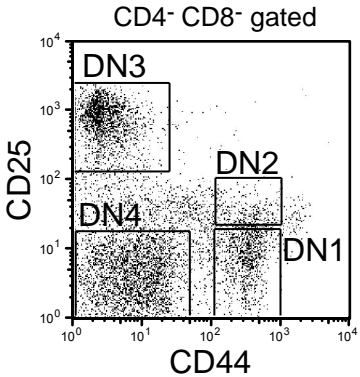


Duncan et al. Supplementary Figure 4



Supplementary Figure 4: Pattern of Notch signaling activation in subpopulations of CD4⁻ CD8⁻ double negative thymocytes

Single cell suspensions of thymocytes from WT and TNR mice were stained for antibodies against CD4, CD8, CD25, and CD44 (e-Biosciences). Expression of GFP was analyzed on DN1-4, which were defined as follows: DN1 CD44⁺CD25⁻, DN2 CD44^{hi}CD25^{lo}, DN3 CD44⁻CD25⁺, DN4 CD44⁻CD25⁻. All subpopulations were CD4⁻CD8⁻. Representative dot plots are shown for one WT and one TNR mouse. Averaged data are shown in **Fig. 1e**.